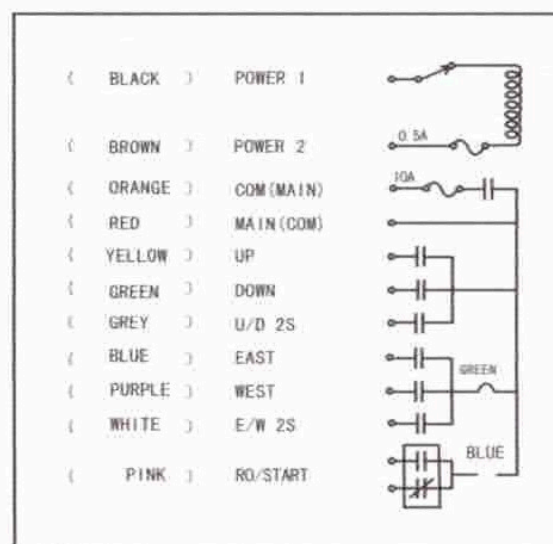


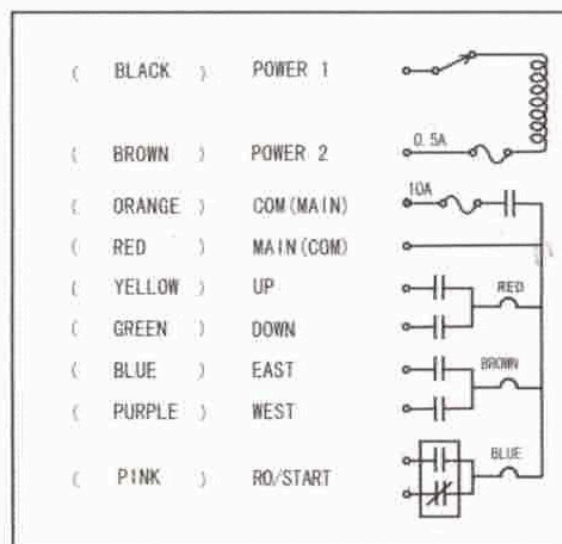


User Manual

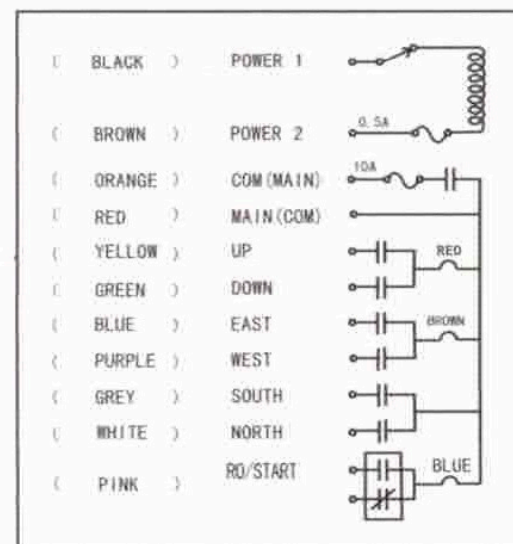
F21-4D



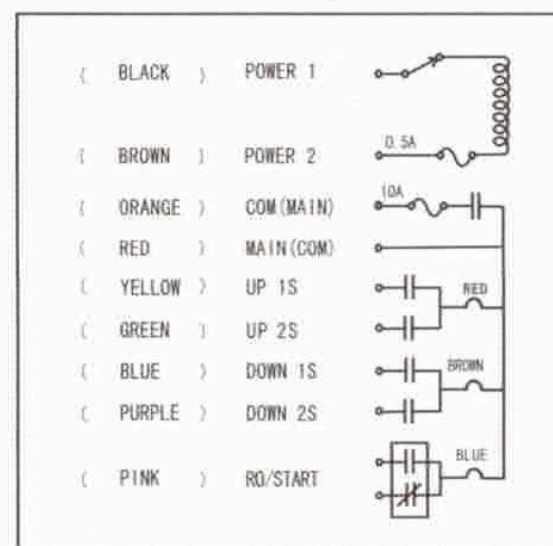
F21-4S/4SB



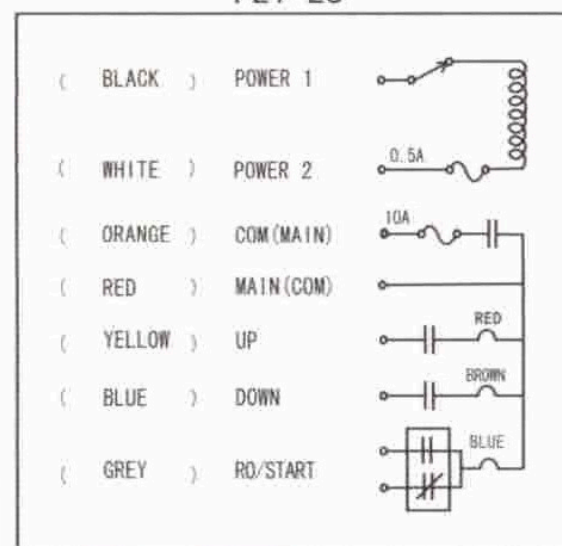
F21-E1/E1B



F21-2D



F21-2S



F21-E1/4D/4S/
2D/2S

Wiring diagram

8. Methods for replacing fuses:

Please use a screwdriver to press down on the cover of the fuse holder and rotate it counterclockwise to open the cover. Remove the fuse again. When assembling, please first place the fuse with the correct current value on the cover, along with the fuse. Insert the fuse wire and cover into the fuse holder, then use a straight screwdriver to press down on the cover and lock it clockwise. Just enough.

9. Nine LED indicator light fault message display:

1. After installing the battery on the transmitter, press the button. If the LED indicator light of the transmitter is in a fast flashing red state, send. The launcher may have the following situations: A. Button stuck (notify dealer to handle) B. Emergency stop button not rotated and pulled up C. Failed to power on correctly according to the set startup method 2. The LED indicator light of the transmitter is flashing slowly with a yellow signal, indicating a memory failure of the transmitter. Please connect it. Dealing with online dealers.

10. Nine LED indicator light malfunction pickup. Simple troubleshooting method:

When the operation is incorrect or abnormal, causing the LED indicator light of the transmitter to remain red, please. Remove the battery and reinstall it to operate the transmitter again. When the receiver fails to operate, please turn off the power of the receiver for more than 20 seconds and then power it back on.

User Manual



F21 Series E1, E1B, 4D, 4S, 4SB, 2D, 2S User Manual

1. Warranty

Quality assurance

Our company guarantees that this product fully complies with its published specifications when it leaves the factory, as long as it is installed properly. Both can be used normally, but the company does not guarantee that the operation of this product will be uninterrupted or error free. Wrong.

Guarantee period

This product comes with a one-year warranty from the date of manufacture, ensuring that customers will not receive any products within one year. If there are any defects in the product quality during the warranty period, the company is willing to repair them. Any product that requires repair must be sent to the designated service center, and the customer must bear the responsibility of product transportation. The one-way shipping fee to the service center, and the company's service center will bear the return cost during the warranty period. Return the product.

Not included items

The aforementioned warranty scope does not include consumable parts such as buttons, relays, fuses, batteries, etc. The substrate damage is caused by installation errors, and does not include customer misuse or force majeure. Due to natural factors, inadequate maintenance, neglect of operating environment specifications, unauthorized changes, errors. Malfunctions caused by the user's use or the customer's own interface settings.

Remarks

- ★ ★ There are no other express or implied warranties regarding the aforementioned guarantees.
- ★ ★ The compensation provided by the warranty is the only compensation for the customer, and the company is not responsible for any direct or indirect compensation. Liability for damage caused by accident, special circumstances, or causality.

2. Precautions

General precautions

- ★ ★ Personnel without professional training are not allowed to disassemble this machine, otherwise it may be damaged and cause personal injury. After use, the main power supply of the overhead crane should be turned off to cut off the power supply of the receiver, and
- ★ ★ the key switch of the transmitter should be turned off. Remove it. The overhead crane should have a main power relay, limit switch, and other safety facilities.



Installation precautions

- The installation location of the receiver must be as far away as possible from the frequency converter, motor, and their connecting cables to avoid interference from noise. The receiver cannot be installed inside the electrical control box. The correct installation method is to fix the receiver in a suitable position on the top (or outside) of the electrical control box, and then thread the receiver output cable into the electrical control box for appropriate wiring. Devices on the same channel cannot be used within a range of 200 meters to avoid radio interference. The operator must be physically healthy, mentally sound, able to identify and judge the safety of the operation, and possess a qualification certificate for operation. The remote control operation panel is set to, up, down, east, west, south, north, start stop, emergency knob, one machine, one lock, and work indicator light. The response time of the remote emergency stop knob is 350ms. The remote control setting has a dedicated key that must be held and operated by professionals or dedicated personnel. There are 4 billion sets of security codes in the remote control, one for each machine. More anti-interference and anti-interference. When the remote control is interfered by high-frequency signals, the operator should close the emergency stop knob within 0.4 seconds. Each remote control is equipped with two No. 5 industrial batteries, and the remote control device is standard. The remote control complies with the relevant regulations of TSG51-2023. If the remote control is not used for a long time, the battery inside the transmitter must be removed.

3. Handling of Emergency Situations:

When an emergency situation occurs, please follow the steps below to handle it and immediately notify the dealer. 1. Press the emergency stop (STOP) button. 2. Remove the key switch of the transmitter. 3. Turn off the main power supply of the overhead crane. 4. Notify the dealer to identify the cause.

4. Ordinary Operations:

1. Install the fully charged AA type (No. 5) battery into the transmitter in the correct direction.
2. Power on according to the set startup mode. Note: If the transmitter is not turned on according to the operating steps, the LED indicator light on the transmitter will quickly flash red.
3. Operate correctly according to the functions set by each button on the transmitter.
4. After the operation is completed, proceed in the following order: (1) press the emergency stop button; (2) turn the rotary key switch counterclockwise in the OFF position, remove the key and store it properly. If it is F21-E1B/4SB/2D/2S, remove the magnetic key. If not used for a long time, the battery in the battery box needs to be removed.

5. Use of transmitter battery:

The transmitter uses two AA alkaline batteries, but rechargeable batteries are prohibited. When the battery voltage is full, press When pressing the transmitter button, the transmitter LED indicator light flashes green; On the contrary, when the battery is used for a period of time When the voltage is insufficient, the LED indicator light of the transmitter will flash red (or the LED indicator light will not light up), and the transmitter will be unable to To continue the operation, it is necessary to immediately replace the battery with a fully charged one.



6. Power selection for terrestrial receivers

The receiver is divided into direct current (DC) or alternating current (AC) models.

1. A receiver suitable for DC power supply, which can be directly connected to a DC power supply of 12-24 volts. 2. A receiver suitable for AC power supply, with 5 types of transformers to choose from for input voltage, namely AC 24/48, 48/110, 48/220, 110/220, and 220/380 volts, each type of transformer has two different voltages. The selection of the voltage selector (JUMPER) on the circuit board depends on the position of high (HI) or low (LO), such as As shown in the attached figure.

Transformer Selector position	AC24/48V	AC48/110V	AC48/220V	AC110/220V	AC220/380V
LOW(LO)	AC24V	AC48V	AC48V	AC110V	AC220V
High (HI)	AC48V	AC110V	AC220V	AC220V	AC380V

7. Methods and labeling for frequency replacement of quartz crystals in transmitters and receivers:

This model has different circuit boards for VHF (300MHz) and UHF (400MHz) frequency bands. In the same frequency band, the quartz crystal can be replaced to achieve channel switching. To switch channels, the quartz crystals of the transmitter and receiver need to be simultaneously converted to the paired frequency for normal operation and use. Please note that the replacement is for the VHF or UHF frequency band and use the correct VHF and UHF quartz crystals. After the letter V or U on the circuit board, there is a "v" symbol indicating the frequency band that the circuit board can use. The following is the method for disassembling and assembling the quartz crystal. (1) First, use a screwdriver to pry up the front end of the quartz crystal. (2) Take out the quartz crystal. (3) To change the channel of the quartz crystal, clamp the feet of

Qualified Inspection Form:

Project	Inspection content
Transmitter	Frequency, power, indicator lights, and dynamic and static energy consumption detection
Receiver	Frequency, power, indicator light frequency, sensitivity, relay contact detection
Finished product	Function settings, button operation, cable output detection
Packing	Appearance and accessory inspection

Qualified inspection